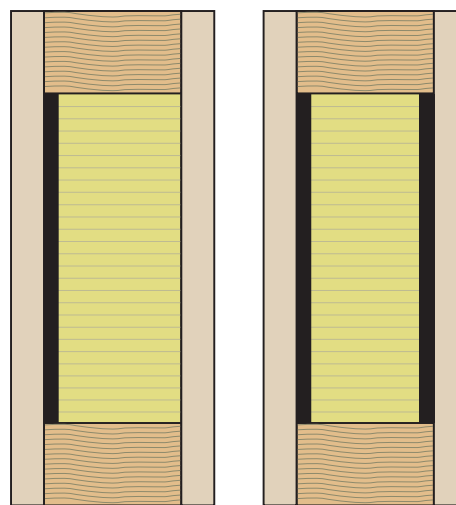


Frame extension elements for wooden and wood-metal windows
Moisture-resistant and with sound insulation

Product description

The moisture-resistant Frinorm sound insulation frame extension elements are the right choice, especially when high levels of moisture resistance and thermal insulation are required. They are available with untreated plywood panel AW100, plywood panel AW100 with primer foil or plywood panel AW100 with real wood veneer in all types of wood. Depending on the sound insulation requirements, the frame extension elements are fabricated with one or two heavy bitumen foils. Glass wool, 20 kg/m³, is used for thermal insulation. The window frame extension elements are fabricated with a circumferential spruce pine edge band. Special edge bands can be inset according to your requirements. All possible CNC edge profile work is performed on all sides according to your profile specifications. Special CNC processing, such as cut-outs and round and segment arches, and surface finishing, such as ventilation slots or surface grooves, are also possible.



Range and design

Type	Cover panel and surface	Thermal insulation	Edge band	U-values	dB-values
Untreated	Both sides 12 mm, plywood panel AW100, untreated	Glass wool, 20 kg/m ³ Sound insulation 1: 1 piece of heavy bitumen foil Sound insulation 2: 2 pieces of heavy bitumen foil	Spruce pine, circumferential (Other types of wood are also available; special edge bands are inset according to your requirements)	Thermal transmittance coefficients up to 0.3 W/m ² K (For U-values, see table on technical data sheet)	Airborne sound insulation values of up to 40 dB (For dB-values, see table on technical data sheet or on download of test reports)
Primer foil	Both sides 9 mm, plywood panel AW100, with primer foil				
Veneered	Both sides 12 mm, plywood panel AW100, covered with 1 mm real wood veneer; available in all types of wood: spruce, pine, larch, fir, oak, etc.; veneer quality A/B (inside A/ outside B) or A/A (inside A/outside A)				

Thicknesses

Thicknesses from 44 to 112 mm can be produced.

For thicknesses of 113 mm and more, see frame extension elements for wooden and wood-metal lifting sliding doors.

For thicknesses below 44 mm, see infill for wooden and wood-metal windows.

Formats

Untreated plywood panel and plywood panel with real wood veneer: all formats from 500 × 95 mm up to 3088 × 1294 mm can be manufactured.

Plywood panel with white primer foil: all formats from 500 × 95 mm up to 2988 × 1294 mm can be manufactured.

CNC edge milling

All possible CNC edge profile work is performed on all sides according to your profile specifications. Special CNC processing, such as cut-outs and round and segment arches, and surface finishing, such as ventilation slots or surface grooves, are also possible.

Consultation

For more information please refer to the technical data sheets.

Our technical consultants are at your service for all questions.