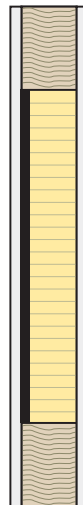
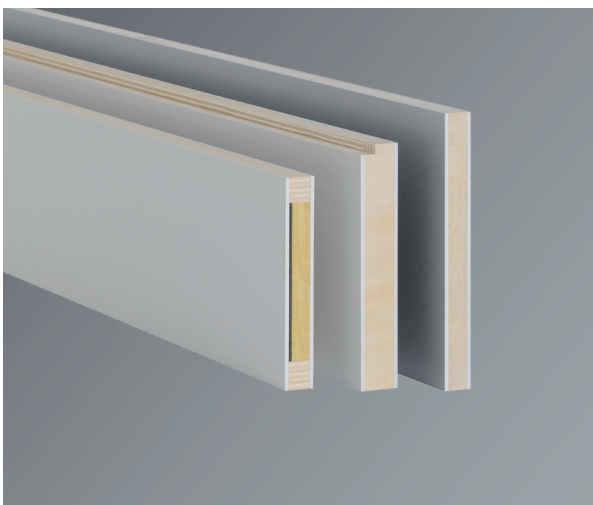


## Infill for plastic windows

### Sound insulation

#### Product description

The Frinorm infills are especially suitable for use as a glass substitute in plastic windows. They are available in hard PVC in different shades of white (Veka, Kömmerling or Finstral) or HPL with decorative foil (all colours). For sound insulation, the frame extension elements are fabricated with heavy bitumen foil. Glass wool, 20 kg/m<sup>3</sup>, is used for thermal insulation. The infills are fabricated with a circumferential spruce edge band. Special edge bands are inset according to your requirements. All possible CNC edge profile work is performed on all sides according to your profile specifications. Special CNC processing, such as cut-outs and round and segment arches, and surface finishing, such as ventilation slots or surface grooves, are also possible.



#### Range and design

Type	Cover panel and surface	Thermal insulation	Edge band	U-values
PVC, white	Both sides 4 mm, hard PVC, colour: Veka, Kömmerling or Finstral	Glass wool, 20 kg/m <sup>3</sup>	Plywood IW67, circumferential	Thermal transmittance coefficients up to 1.0 W/m <sup>2</sup> K  (For U-values, see table on technical data sheet)
HPL, decorative foil	Both sides 4 mm, HPL, coated with decorative foil; all colours available	<b>Sound insulation:</b> 1 piece of heavy bitumen foil		

#### Thicknesses

Thicknesses from 25 to 39 mm can be produced.

For thicknesses of 40 mm and more, see window frame extension elements for plastic windows.

#### Formats

Hard PVC, white: all formats from 500 × 95 mm up to 3588 × 1294 mm can be manufactured.

HPL, decorative foil: all formats from 500 × 95 mm up to 2988 × 1294 mm can be manufactured.

**CNC edge milling**

All possible CNC edge profile work is performed on all sides according to your profile specifications. Special CNC processing, such as cut-outs and round and segment arches, and surface finishing, such as ventilation slots or surface grooves, are also possible.

**Consultation**

For more information please refer to the technical data sheets.

Our technical consultants are at your service for all questions.